

Technical News

Conditions of Use:

- (1) Please use this information only for the purpose of performing repair, maintenance and/or configuration services of the Sony products (hereinafter the "Repair services") under the service agreement entered into with the Sony group company (hereinafter the "Service agreement"). Using this information for any purpose other than the purpose described foregoing is forbidden.
- (2) Only the Authorized Servicer's officers, employees or subcontractors (including their officers and employees) whose duties justify a need-to-know and who have agreed to hold confidential this information (collectively hereinafter the "Permitted users") are permitted to access and use this information. To disclose or disseminate to any person other than the Permitted users is forbidden.
- (3) Destroy or erase any and all portion of this information promptly in an irrecoverable and secure fashion after achieving the purpose described in Section (1) above.
- (4) Do not copy, replicate, reproduce, alter, translate, transmit, sell, lease, or distribute this information in whole or in part without the prior written permission of the author. (Notwithstanding foregoing, it is permitted to copy and distribute this information to the Permitted users.)
- (5) Please notify immediately any leakage, loss, theft, misappropriation, or other misuse of this information by e-mail to the following address:
somk-gcs-tissnexim-adm@jp.sony.com
- (6) In addition to the above, the terms and conditions of the Service agreement shall be applied to using this information.

Revision of Information:

This information may be changed or updated at any time without any prior notice. Please confirm that this information is up-to-date before using it.

Issue No.	Issue company	Issue Date (yyyy/mm/dd)	Revised Date (yyyy/mm/dd)	
PV21SEL-520	IPS(DI)	2021/12/21		
Subject				
Repair Parts Change Information				
Model	Destination	Country of origin	Serial number	Color
SEL2870	ALL	Thailand	~1049432	
		China	~4415089	








INFORMATION

There is a change in the support for the replacement of some repair parts. It is related to "PV21SEL-018/518" and requires different handling before and after the cutoff serial number.

Check the flow chart in the **"REQUIRED PART / TOOL / SOFTWARE"** section before repairing.

As of the publication of this Technical News, the support described in PV21SEL-018/518 will be terminated.

* There are two types of indication of "region of origin and serial No.".

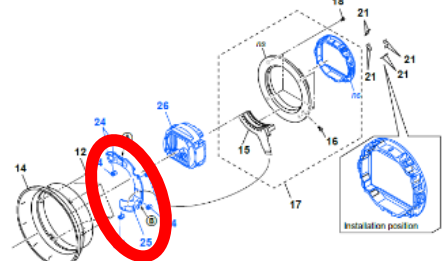
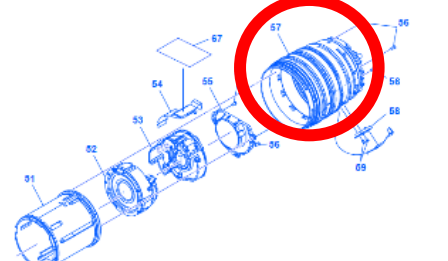
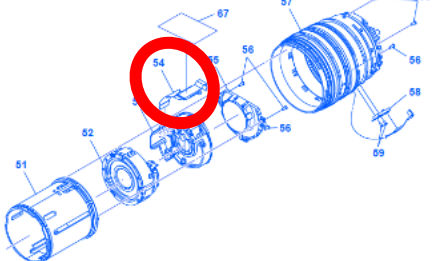
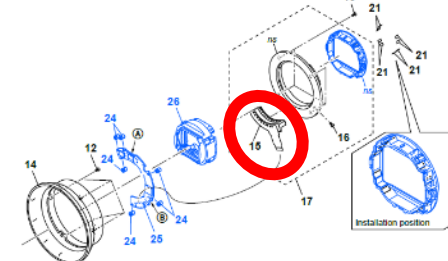
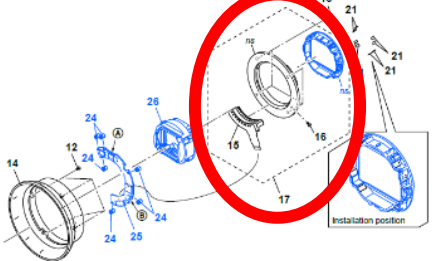

Type1	Type2
Serial No. : indicated on the label Region of origin : indicated inside the mount	Serial No. : indicated on the label Region of origin : indicated on the label
 	 
 	

SOLUTION

If it is necessary to repair with a serial number prior to the cutoff serial number, and it requires the replacement of any of the parts in the table below, please follow the flowchart in the **"REQUIRED PART / TOOL / SOFTWARE"** section.

*For repairs after the cutoff serial number, refer page 9.

- Parts that need to be checked for flowchart

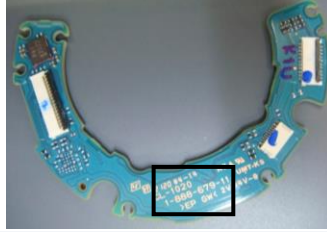
<p>CL-1020, COMPLETE PC BOARD (SERVICE) *Refer page 3.</p>	
<p>SERVICE, FIXEDTUBE ASSY *Refer page 4.</p>	
<p>LF-2069 FLEXIBLE PWB (CN9129) *Refer page 5.</p>	
<p>BL CONTACT ASSY *Refer page 6.</p>	
<p>MOUNT ASSY *Refer page 7.</p>	
<p>OPTICAL BLOCK FOR SERVICE *Refer page 8.</p>	

REQUIRED PART / TOOL / SOFTWARE

Please follow the flowchart below when replacing the target parts.

Replacing the CL-1020, COMPLETE PC BOARD

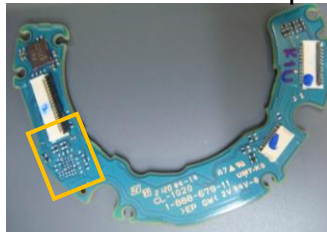
Check the printing of the square part of the CL-1020, COMPLETE PC BOARD photo.



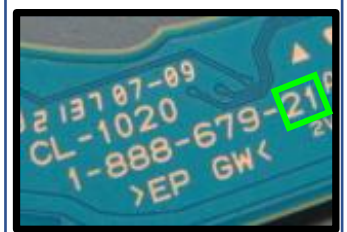
For "1-888-679-11"



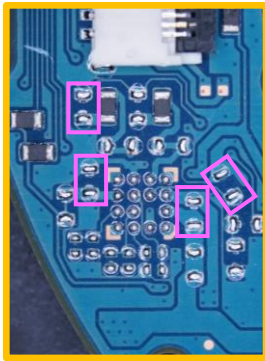
Check for the presence of surface mount devices in the square area.



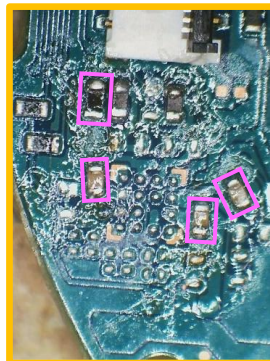
For "1-888-679-21"



No surface mount devices in the square area



Surface mount devices are present in the square area



Both of A-2107-277-**A** CL-1020, COMPLETE PC BOARD(SERVICE)

*Parts listed in the service manual and

A-2107-277-**B** CL-1020, COMPLETE PC BOARD(SERVICE)

can be used for the replacement.

Refer to the service manual for the replacement procedure.

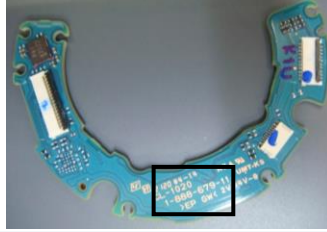
Only A-2107-277-**B** CL-1020, COMPLETE PC BOARD(SERVICE) can be used for the replacement.

Refer to the service manual for the replacement procedure.

Please follow the flowchart below when replacing the target parts.

Replacing the SERVICE, FIXEDTUBE ASSY

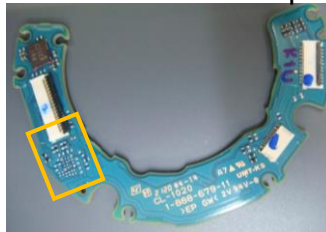
Check the printing of the square part of the CL-1020, COMPLETE PC BOARD photo.



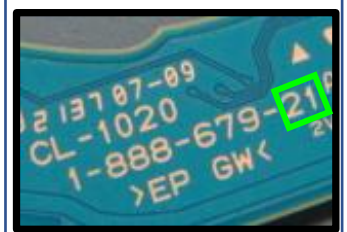
For "1-888-679-11"



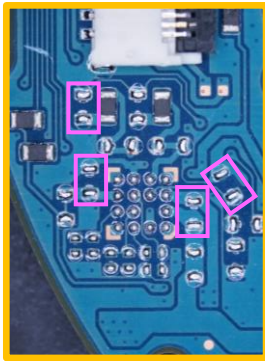
Check for the presence of surface mount devices in the square area.



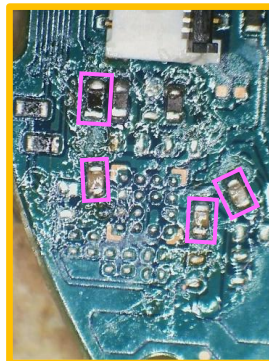
For "1-888-679-21"



No surface mount devices in the square area



Surface mount devices are present in the square area



Only A-2107-273-A SERVICE, FIXEDTUBE ASSY needs to be replaced.
*Parts listed in the service manual

Refer to the service manual for the replacement procedure.

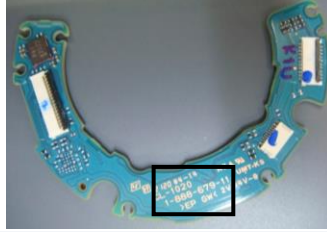
In addition to A-2107-273-A SERVICE, FIXEDTUBE ASSY
*Parts listed in the service manual,
A-2107-277-B CL-1020, COMPLETE PC BOARD(SERVICE) also needs to be replaced.

Refer to the service manual for the replacement procedure.

Please follow the flowchart below when replacing the target parts.

Replacing the LF-2069 FLEXIBLE PWB (CN9129)

Check the printing of the square part of the CL-1020, COMPLETE PC BOARD photo.



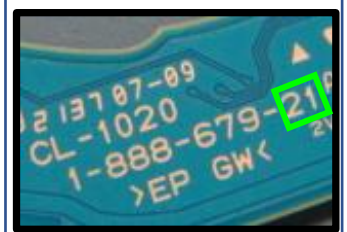
For "1-888-679-11"



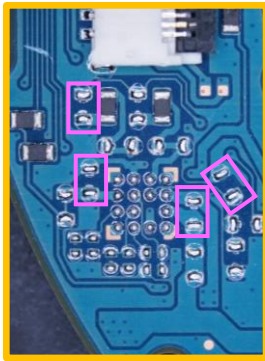
Check for the presence of surface mount devices in the square area.



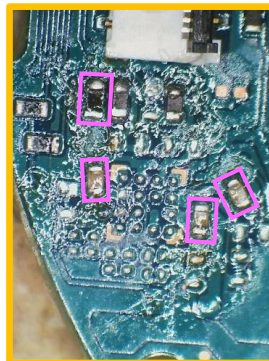
For "1-888-679-21"



No surface mount devices in the square area



Surface mount devices are present in the square area



Only 1-889-221-12 LF-2069 FLEXIBLE PWB (CN9129) needs to be replaced.
*Parts listed in the service manual

Refer to the service manual for the replacement procedure.

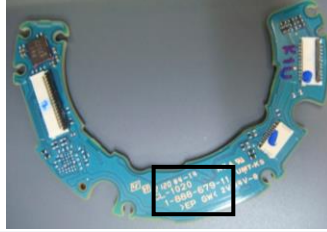
In addition to 1-889-221-12 LF-2069 FLEXIBLE PWB (CN9129)
*Parts listed in the service manual, A-2107-277-B CL-1020, COMPLETE PC BOARD(SERVICE) also needs to be replaced.

Refer to the service manual for the replacement procedure.

Please follow the flowchart below when replacing the target parts.

Replacing the BL CONTACT ASSY

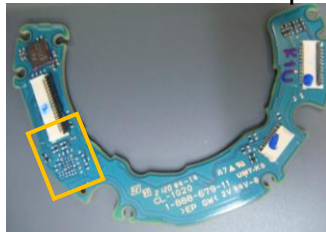
Check the printing of the square part of the CL-1020,
COMPLETE PC BOARD photo.



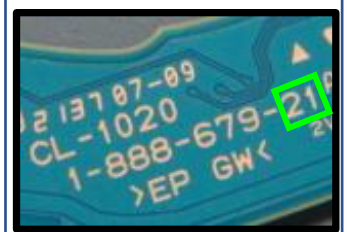
For "1-888-679-11"



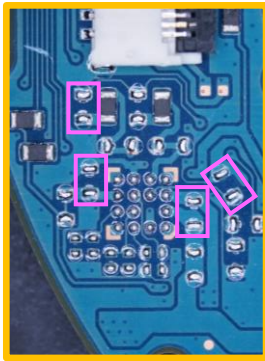
Check for the presence of surface
mount devices in the square area.



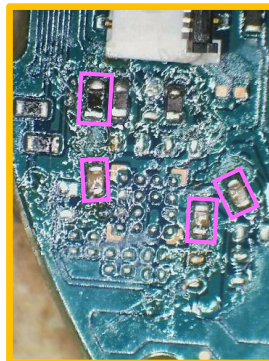
For "1-888-679-21"



No surface mount devices
in the square area



Surface mount devices are
present in the square area



Only A-1966-719-A BL CONTACT ASSY
needs to be replaced.

*Parts listed in the service manual

Refer to the service manual for the
replacement procedure.

In addition to A-1966-719-A BL CONTACT
ASSY

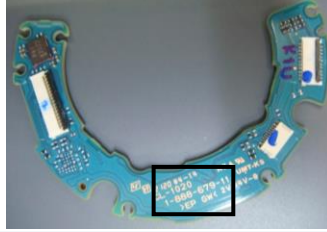
*Parts listed in the service manual,
A-2107-277-B CL-1020, COMPLETE PC
BOARD(SERVICE) also needs to be replaced.

Refer to the service manual for the
replacement procedure.

Please follow the flowchart below when replacing the target parts.

Replacing the MOUNT ASSY

Check the printing of the square part of the CL-1020,
COMPLETE PC BOARD photo.



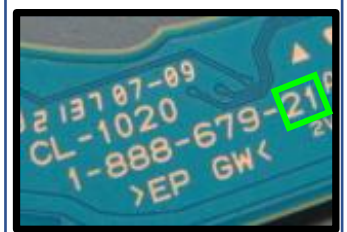
For "1-888-679-11"



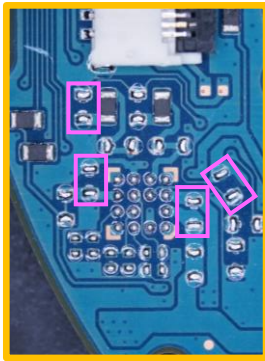
Check for the presence of surface
mount devices in the square area.



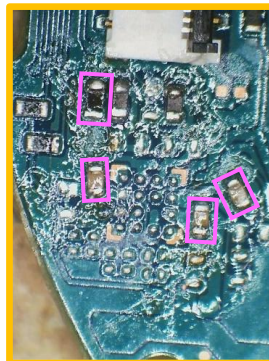
For "1-888-679-21"



No surface mount devices
in the square area



Surface mount devices are
present in the square area



Only A-1992-167-A MOUNT ASSY needs to
be replaced.

*Parts listed in the service manual

Refer to the service manual for the
replacement procedure.

In addition to A-1992-167-A MOUNT ASSY

*Parts listed in the service manual,
A-2107-277-B CL-1020, COMPLETE PC
BOARD(SERVICE) also needs to be replaced.

Refer to the service manual for the
replacement procedure.

Please follow the flowchart below when replacing the target parts.

Replacing the OPTICAL BLOCK FOR SERVICE

Check the region of origin and serial number of the product

If the region of origin and serial number of the repaired product are in the table below

region of origin	serial number	
Thailand	~	1032469
	1032471	~ 1032496
	1032498	~ 1032535
	1032537	~ 1032541
	1032582	
	1032591	~ 1032617
	1032619	~ 1039246
China	~	4403437
	4403439	~ 4403768
	4403800	~ 4406716

If the region of origin and serial number of the repaired product are in the table below

region of origin	serial number	
Thailand	1032470	
	1032497	
	1032536	
	1032542	~ 1032581
	1032583	~ 1032590
	1032618	
	1039247	~ 1049432
China	4403438	
	4403769	~ 4403799
	4406717	~ 4415089

Both of
A-1973-252-A
 OPTICAL BLOCK FOR SERVICE
 *Parts listed in the service manual
 and
A-1973-252-B
 OPTICAL BLOCK FOR SERVICE
 can be used for the replacement.

 Refer to the service manual for the
 replacement procedure.

Only the **A-1973-252-B**
 OPTICAL BLOCK FOR
 SERVICE can be used for the
 replacement.

 Refer to the service manual for
 the replacement procedure.

For the products with the following cutoff serial numbers or later, please use the parts listed in the [Repair parts compatibility chart] below for replacement.

region of origin	serial number
Thailand	1049433 ~
China	4415090 ~

[Repair parts compatibility chart]

Replacement parts	Available repair parts
CL-1020, COMPLETE PC BOARD	A-2107-277- B CL-1020, COMPLETE PC BOARD(SERVICE)
OPTICAL BLOCK FOR SERVICE	A-1973-252- B OPTICAL BLOCK FOR SERVICE

REVISION HISTORY

Revision	Qty	Date	Memo
		2021/12/21	RELEASE
△ 4			